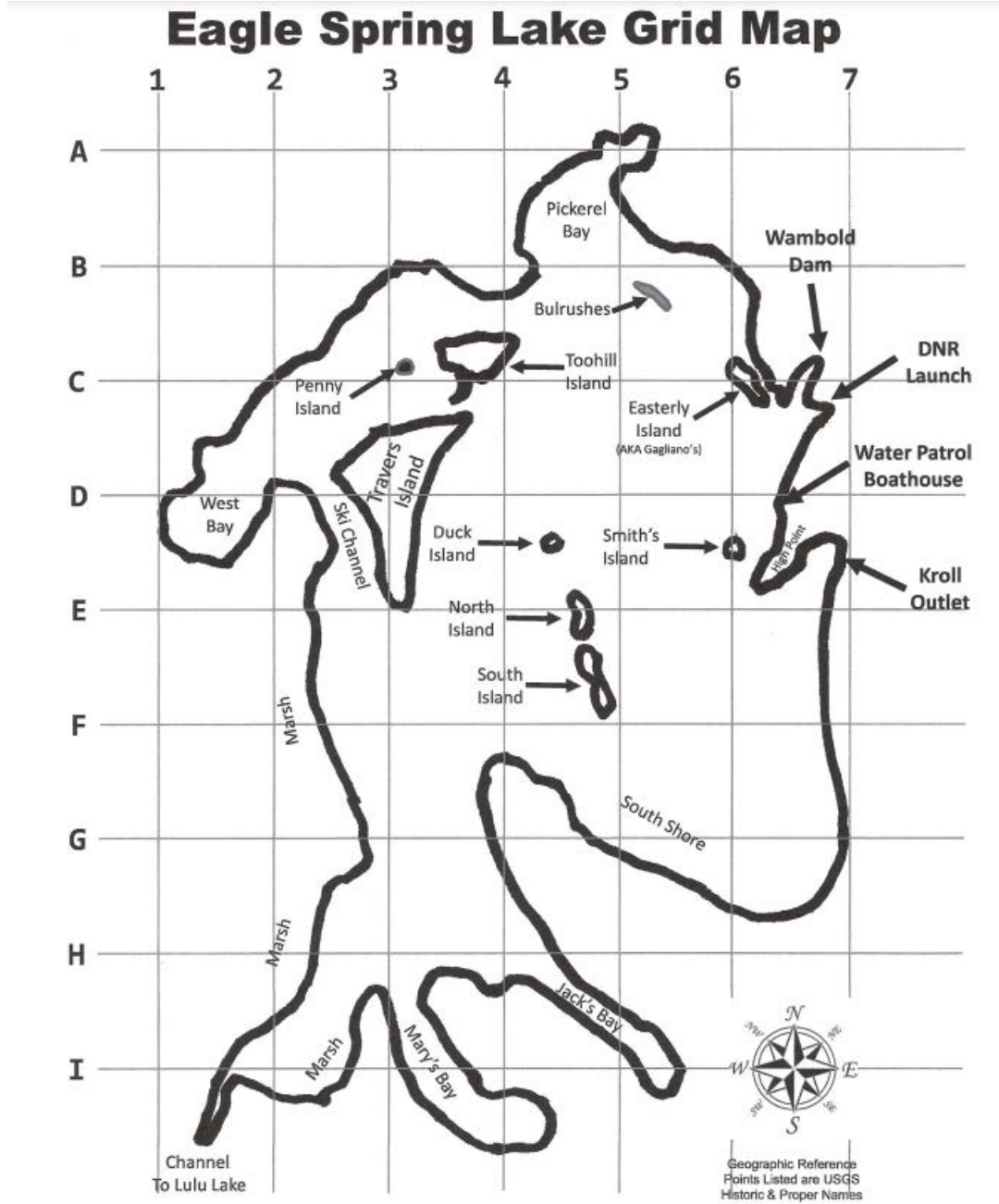


Eagle Spring Lake Starry Stonewort (SSW) Survey 10/21/24

Amanda Schmitz and John Grams

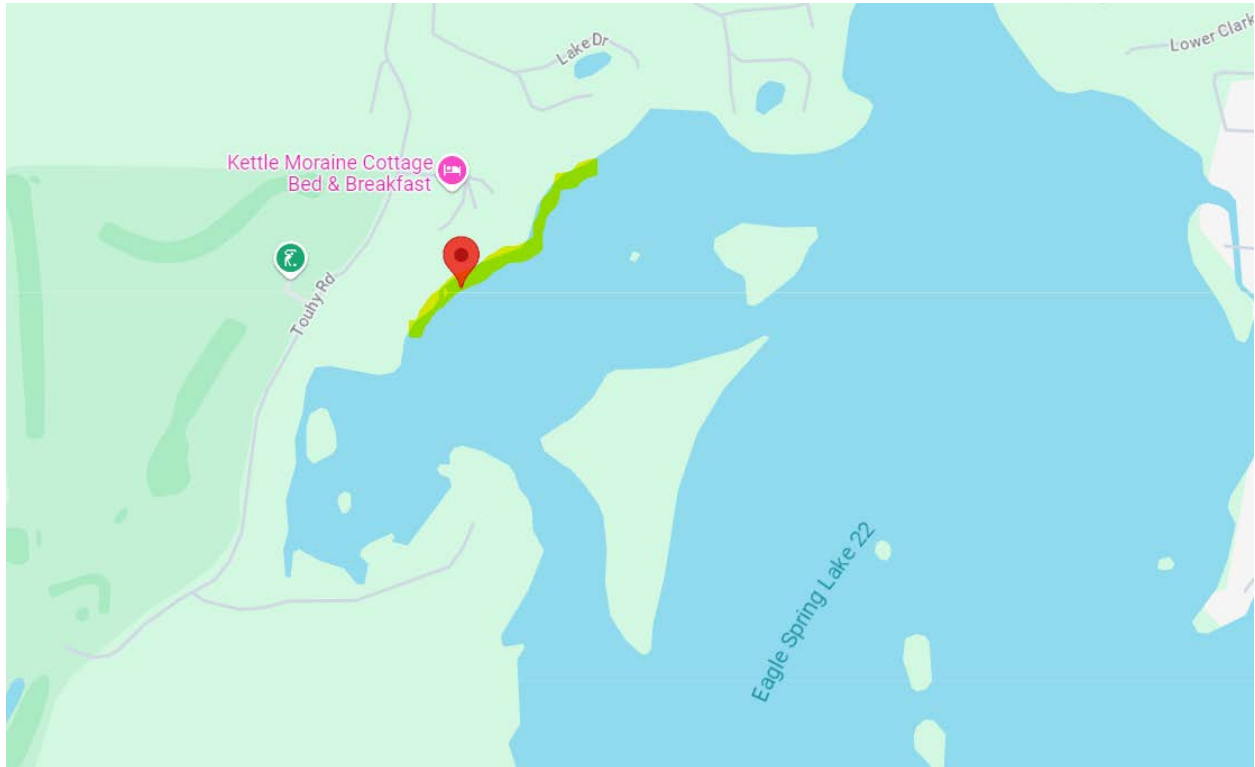
The entire shoreline of Eagle Spring Lake was observed from a pontoon in search of SSW. Sunny, warm day, decent visibility in some areas, some areas turbid. Rope rake was used to sample plants.



Results:

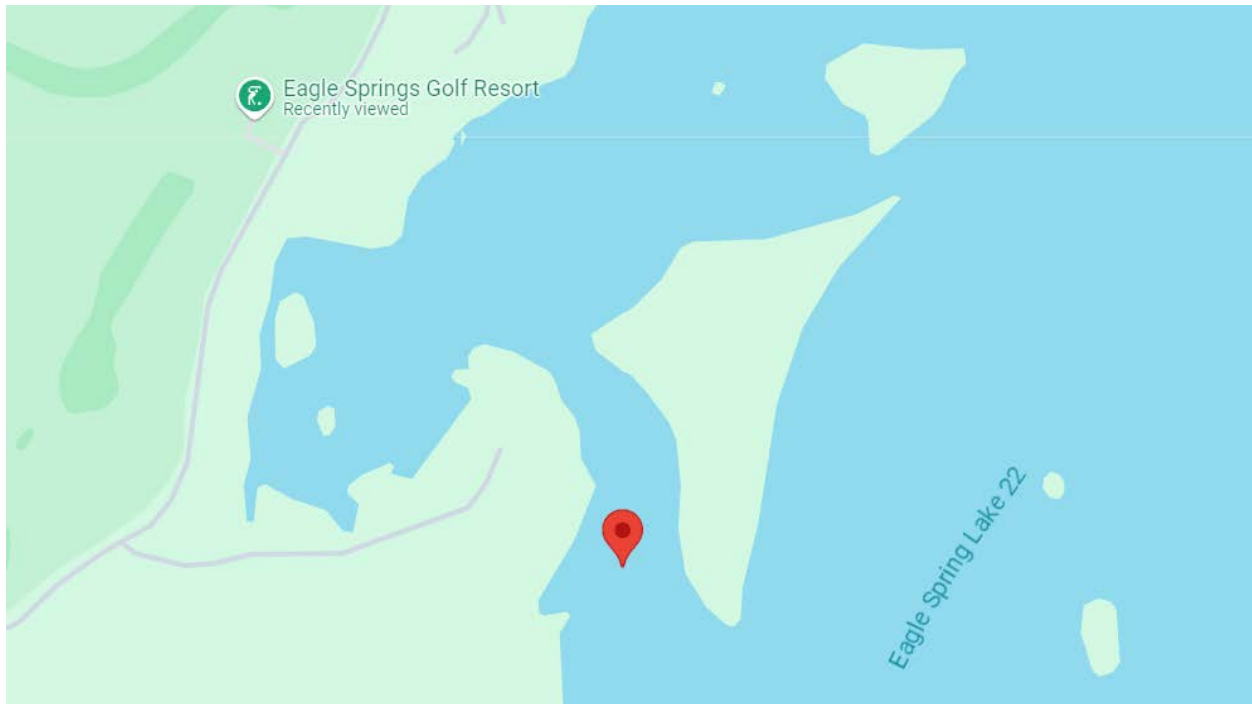
SSW found in 4 areas (including Pickerel Bay, where it was previously documented).

Location 1: North of Travers Island, East of West Bay. Near golf course. [42.855909, -88.446914](#)



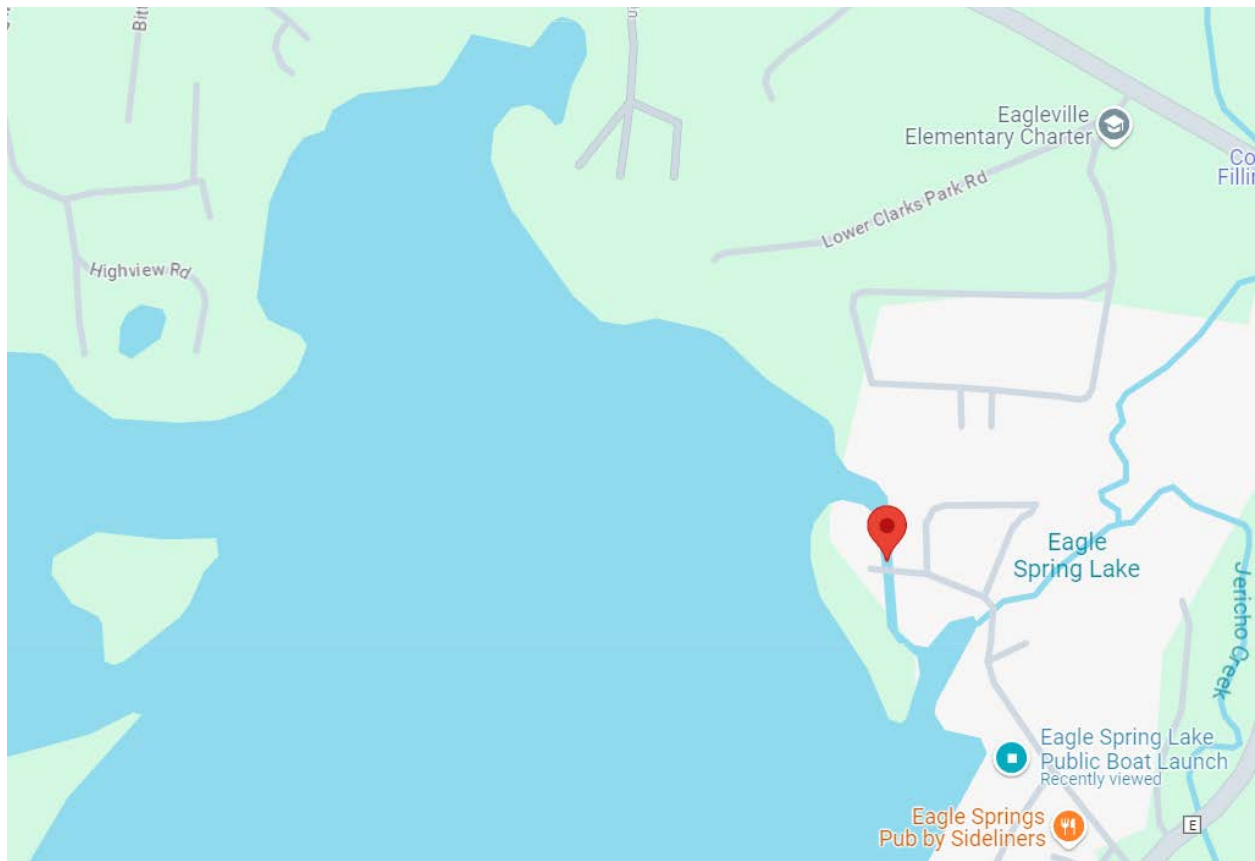
SSW is present along this shoreline in various patches, some of them relatively large and monoculture. Large patches mixed with native milfoil and chara. No SSW observed past the mouth of West Bay.

Location 2: Ski channel. [42.852554, -88.445461](#)



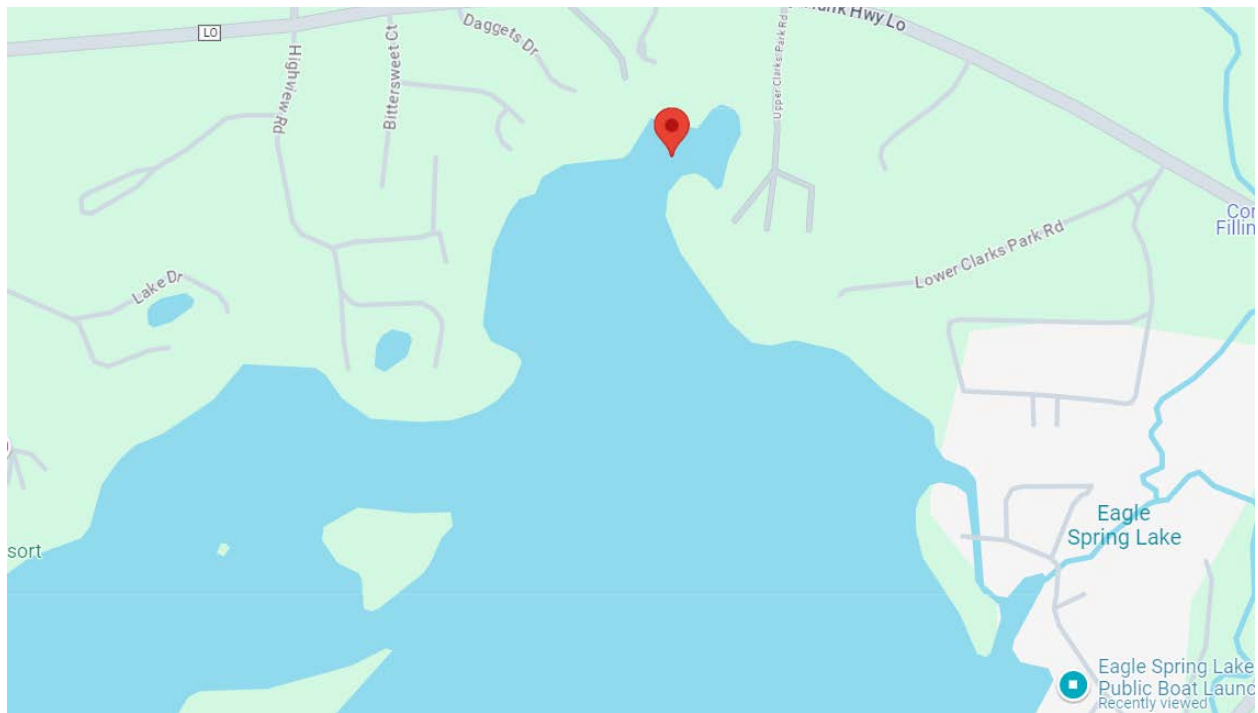
SSW was found on 2 rake throws throughout the ski channel. Due to the time of year, the channel is filled with Sago Pondweed which has senesced to the bottom of the lake, covering the lake bed heavily like grass. SSW was found tucked underneath the Sago beds on 2 rake throws. Recommend that this area is checked again next summer as the extent of the SSW will be more visible and apparent at that time.

Location 3: North side of Easterly Island near bridge [42.856378, -88.435945](#)



SSW was found near the foot bridge north of Easterly Island. Small amount of SSW came up on the rake throw right near the bridge.

Location 4: Pickerel Bay [42.859477, -88.439377](#)



SSW previously documented here. Pickerel Bay has the densest population of SSW with semi-thick, monocultured beds present throughout.